

# Together, we are making higher education more affordable for Christian leaders.

**“For surely I know the plans I have for you ... plans for your welfare and not for harm, to give you a future with hope.”**

**– Jeremiah 29:11, NRSV**





## **MAKING HIGHER EDUCATION MORE AFFORDABLE!**

Every night, there are United Methodist students who go to sleep worrying about the rising costs of higher education and paying off their student debt.

**The good news is that together, we can make higher education more affordable for Georgia Christian leaders who wish to continue their education and faith journeys at a United Methodist-related college, university, or seminary.**

The Georgia United Methodist Foundation is committed to financially empowering future generations as they discern God's call in the world. We have awarded 854 scholarships worth \$727,700 since 2011 thanks to generous donors and our partnership with the United Methodist Dollars for Scholars (UMDFS) Program administered by the United Methodist Higher Education Foundation (UMHEF).

## **HOW CAN I HELP MAKE A DIFFERENCE?**

When you set up a \$25,000 endowment fund with GUMF, your investment will generate a \$1,000 scholarship each year! Plus, your \$1,000 gift has the potential to be quadrupled through the UMDFS Program when matched with a \$1,000 award from the student's local United Methodist church, the UMHEF, and participating United Methodist-related schools.

## **IMPACTING LIVES THROUGH ENDOWED SCHOLARSHIPS**



**Jayla Ores, Junior**  
**Clark Atlanta University, Atlanta**  
**Mass Media Arts Major**  
**Grace UMC, Covington**

"The United Methodist Dollars for Scholars scholarship has impacted my life in several ways. First, it allows me to continue my educational and spiritual journey at a United Methodist institution, which also is the school of my choice (Clark Atlanta University). Secondly, it relieves some of the financial burdens and the worry of the possibility of not meeting my financial obligations. This allows more time for me to concentrate on my studies and to be an active participant in school activities. I am appreciative of GUMF for matching the UMDFS. This generosity has inspired me to continue to do for others and engage in church worship."

## THESE ENDOWED SCHOLARSHIPS ARE PROVIDING ANNUAL SCHOLARSHIPS FOREVER!

Braswell-Savage Scholarship  
Rev. Dan and Carol Brown Scholarship  
Mac and Cat Bryant Scholarship  
Bill and Inez Coffeen Scholarship  
Stanley and Mary Ann Drake Scholarship  
Dr. Glenn L. Ethridge Scholarship  
Rev. Martha Forrest Scholarship  
Gammon Theological Seminary Scholarship  
Rev. Jim Giddens Scholarship  
Griner-Isom Family Scholarship  
GUMF Scholarship  
Hall-Knox Scholarship  
Bishop Sue Hauptert-Johnson Scholarship  
ICEE (Inspire, Creativity and Excellence through  
Encouragement) Scholarship  
Patricia Jackson Lanzillotti Scholarship  
Rev. Keith E. Lawder Scholarship  
Lawder Family Scholarship  
Mathews Family Scholarship  
Dr. Sam and Bobbie Matthews Scholarship  
Dr. C. Frank McCook Scholarship  
Bill and Edith McFee Memorial Scholarship  
Ena and Lige Moore Memorial Scholarship  
Trulye Ann Moore Memorial Scholarship  
MPH Scholarship  
Kenneth D. Parks and Karen Elaine Webster Parks  
Scholarship  
Gerald and Jacqueline Davis Perry Scholarship  
Dr. Larry Graydon Ray Memorial Scholarship  
Sardis UMC Scholarship  
Peggy and Fred Tucker Scholarship  
Dr. Gil Watson Scholarship  
Harold and Margaret Young Memorial Scholarship

## WHY I INVEST IN STUDENTS



**Bill Coffeen established a scholarship in honor of his parents.**

"I established the Bill and Inez Coffeen Scholarship Endowment because I couldn't think of a better way to honor my parents who have always valued a college education. My father's father and his father before him obtained advanced degrees. My mother also graduated from college in 1940. We need to support students and future Christian leaders who carry the torch of salvation into a world that needs to hear and embrace the words and sacrifice of Jesus. GUMF has developed legacy vehicles that in combination multiply the impact of one gift."

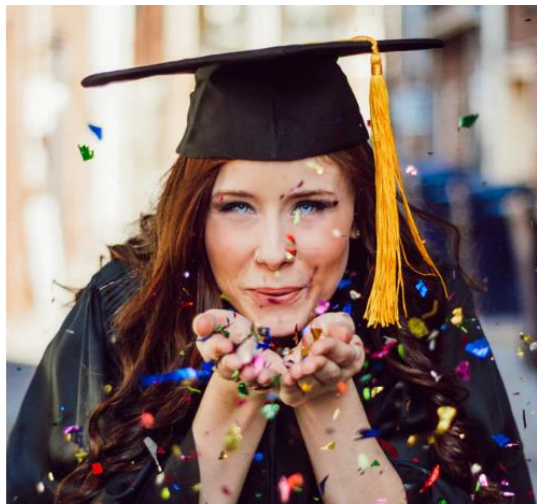


**Phyllis Gordon is funding a scholarship with a gift through her estate plan.**

"I named Cascade UMC as a beneficiary in my will. One day funds from the sale of my home will provide scholarships. I am a lifelong learner, and I believe education is vital in our society. I want to see students excel and not go home because they don't have enough funds to continue their education."

# SCHOLARSHIP ENDOWMENT GIVING TO GUMF

## Frequently Asked Questions



### **Q: What is an endowment fund?**

**A:** An endowment is a financial donation to a nonprofit organization like GUMF that is invested in perpetuity to establish a permanent source of income to support a program or ministry that is close to the donor's heart. The goal is to preserve the principal or original value of the gift while using the income on the investment to fund an annual distribution.

### **Q: How much money do I need to start a scholarship endowment?**

**A:** You will need \$25,000 to create an endowment that will generate a \$1,000 annual scholarship in perpetuity. Each year through 2025, the first three donors who give \$20,000 will receive a challenge match of \$5,000 from an anonymous donor. Your gift can be funded at one time or pledged over three to five years.

### **Q: Is anything else required to start an endowment?**

**A:** Yes. You will need to sign an endowment agreement with GUMF that identifies the name of the endowment, terms, and purpose of the fund.

### **Q: May I choose the name of the endowment?**

**A:** Yes. You can name an endowment for yourself, in honor or memory of your family, your friend, your pastor, your Sunday school class, your church or even your favorite ministry. It's your choice.

### **Q: Can I create an endowment fund with a gift through my estate plan?**

**A:** Yes. GUMF offers free individual meetings for United Methodist members to discuss effective planned giving strategies for creating a legacy that also benefits your family.

### **Q: I'm not prepared to start an endowment at this time. Can I give a smaller amount to support an existing scholarship fund at GUMF?**

**A:** Yes. You can make a gift of any size to GUMF's Scholarship Endowment by mailing a check made payable to the Georgia United Methodist Foundation. Our address is PO Box 922087, Peachtree Corners, GA 30010-2087.

### **Q: Who manages GUMF's endowment assets?**

**A:** All endowment assets are kept under the watchful eyes of GUMF's Investment Committee, competent staff and Wespath Investment Management, an agency of The United Methodist Church. All funds are invested in a socially responsible and sustainable manner according to The Book of Discipline of The United Methodist Church.

### **Q: How can I learn more about endowing a scholarship through GUMF?**

**A:** We'd love to hear from you! In addition to establishing a scholarship through UMDFS, you may also set up an endowed scholarship for GA Methodist students not attending Methodist colleges and/or non-Methodist students attending Methodist colleges and universities. If you have any questions, please contact us at 770-449-6726, 877-220-5664, 478-256-7130 (South Georgia), or [info@gumf.org](mailto:info@gumf.org), or visit [www.gumf.org](http://www.gumf.org).

# UNITED METHODIST DOLLARS FOR SCHOLARS PROGRAM

## Frequently Asked Questions

### Q: How does the United Methodist Dollars for Scholars (UMDFS) Program work?

**A:** The UMDFS Program administered by the United Methodist Higher Education Foundation (UMHEF), gives you the opportunity to triple or quadruple your scholarship gift each year to students attending a United Methodist-related college, university, or seminary.

Your Scholarship Endowment Gift: \$1,000

Matching Support from Georgia Student's United Methodist Church: \$1,000

Matching Support from the UMHEF: \$1,000

Matching Support from Participating United Methodist-related Schools: \$1,000

**Total Scholarship Opportunity: \$4,000**

### Q: How do students qualify for a UMDFS scholarship?

**A:** Students must be an active, full member of a Georgia United Methodist church for at least one year prior to applying and must be enrolled or planning to enroll in a full-time degree program (undergraduate or graduate) at one of the 100+ participating United Methodist-related colleges, universities or seminaries across the U.S.

### Q: How do students apply for a UMDFS scholarship?

**A:** UMHEF accepts UMDFS applications between January 1 and March 1 of each year. To learn more, visit: [www.umhef.org/scholarships/umdfs/](http://www.umhef.org/scholarships/umdfs/).

### Q: Can the UMDFS scholarship be awarded to applicants based on additional eligibility criteria?

**A:** Yes. For example, you may designate scholarships be given to students who are members of a specific United Methodist church or



conference, who major in a specified field or who attend any participating United Methodist-related school.

### Q: Which United Methodist schools in Georgia participate in the UMDFS program?

**A:** The following United Methodist schools participate in the UMDFS program:

- Andrew College
- Candler School of Theology
- Clark Atlanta University
- Emory University
- Gammon Theological Seminary
- LaGrange College
- Paine College
- Reinhardt University
- Wesleyan College
- Young Harris College

To view the entire list of participating United Methodist schools in the U.S., please visit: [www.umhef.org/about/schools/listofschools/](http://www.umhef.org/about/schools/listofschools/).

### Q: How can I learn more about the UMDFS Program?

**A:** If you have questions about the UMDFS Program, please contact the UMHEF at 800-811-8110 or visit [www.umhef.org/scholarships/umdfs/](http://www.umhef.org/scholarships/umdfs/).



**Georgia United Methodist Foundation**

**PO Box 922087**

**Peachtree Corners, GA 30010-2087**

**Phone: 770-449-6726 • 877-220-5664**

**South GA Phone: 478-256-7130**

**Fax: 770-449-6680**

**[www.gumf.org](http://www.gumf.org) • [info@gumf.org](mailto:info@gumf.org)**